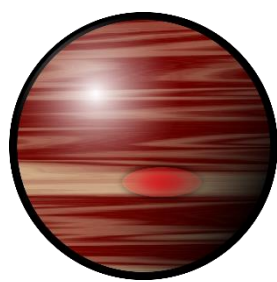
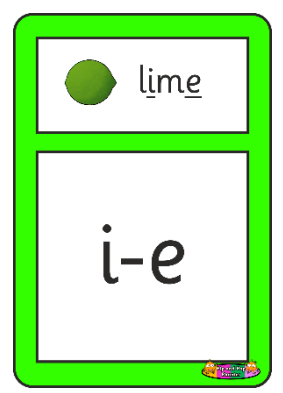




# Green Phase



## Planet Challenge



### Revisit and Review

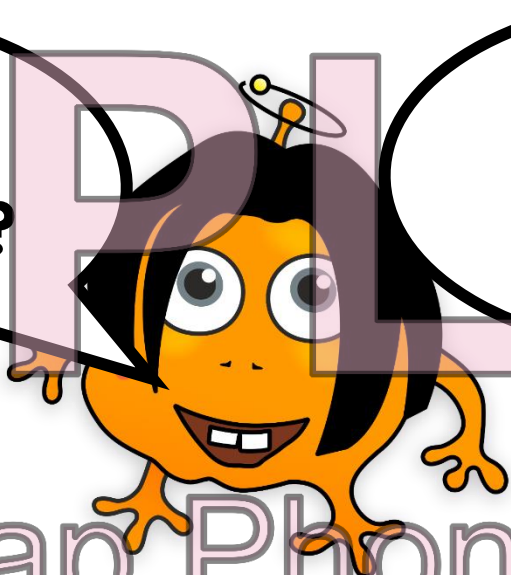
Can you answer each character's question?  
Read their speech bubble, then write 'yes' or 'no' underneath.

SAMPLE

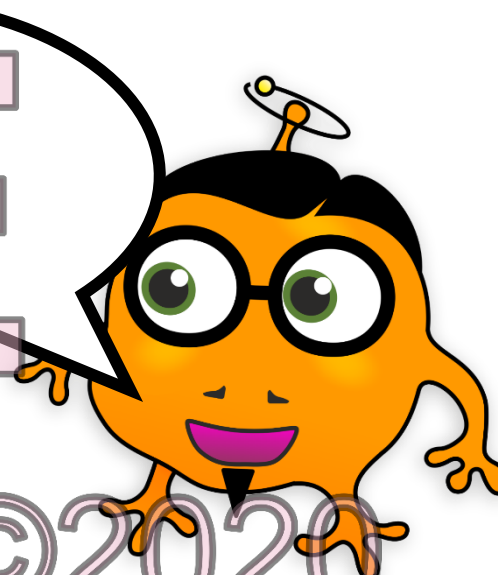
Is three an even number?



Can you eat swede?

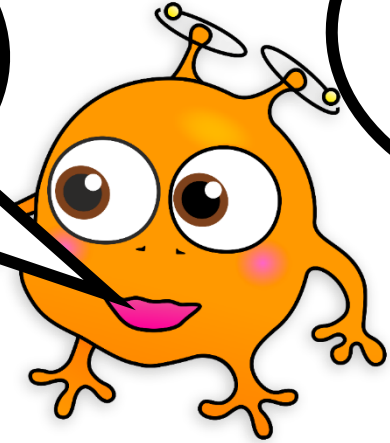


Do all athletes swim?

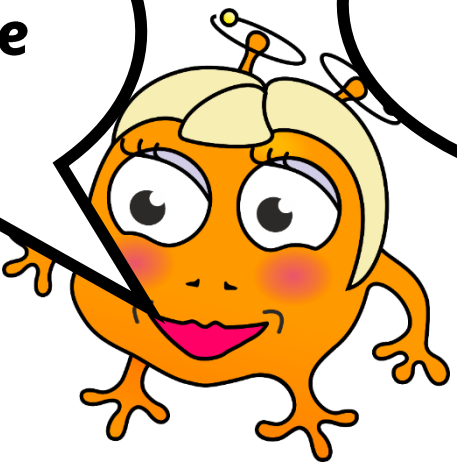


Copyright Pip and Pap Phonics ©2020

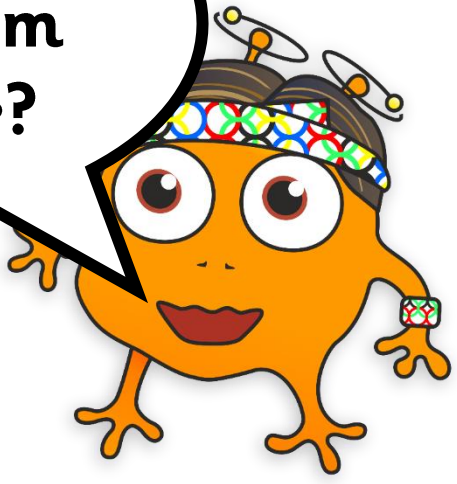
Do you have lunch in the evening?



Is running an extreme sport?



Is a road made from concrete?



# Teach

All of these words contain the split digraph 'i-e'.  
Can you read them aloud?

like	time	pine	ripe	shine
slide	prize	invite	inside	hide
glide	kite	bike	bite	dive
bride	five	fire	hide	lime
line	mine	pipe	pile	slide
ride	smile	spine	stile	vine
grime	tide	tile	dine	slime

SAMPLE

Copyright Pip and Pap Phonics ©2020

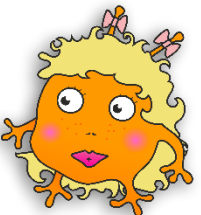
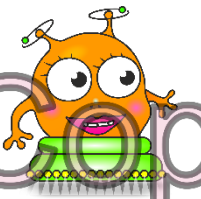
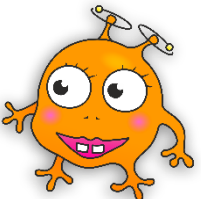
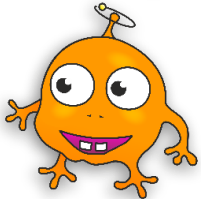
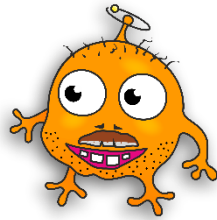
tie  
ie

night  
igh

lime  
i-e

## Practise

Read the mini story below. Can you underline any words with the split digraph 'i-e'?  
Then, can you answer the questions your teacher asks you?



Dad took the kids to the park.

Pip flew a kite in the air. He liked seeing it dive and glide in the wind.

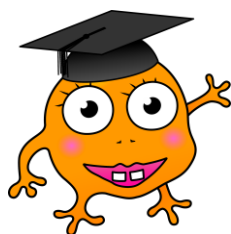
Pap went on the slide. She gave Dad a big smile as she went down!

Tisp played hide and seek in the sunshine. It was fun!

Min had a ride on her bike in the grass.

SAMPLE

Copyright Pip and Pap Phonics ©2020



### Pap's Challenge

Read Pap's clues.

Can you work out the mystery number?

Write it in the box.

I am thinking of a number.

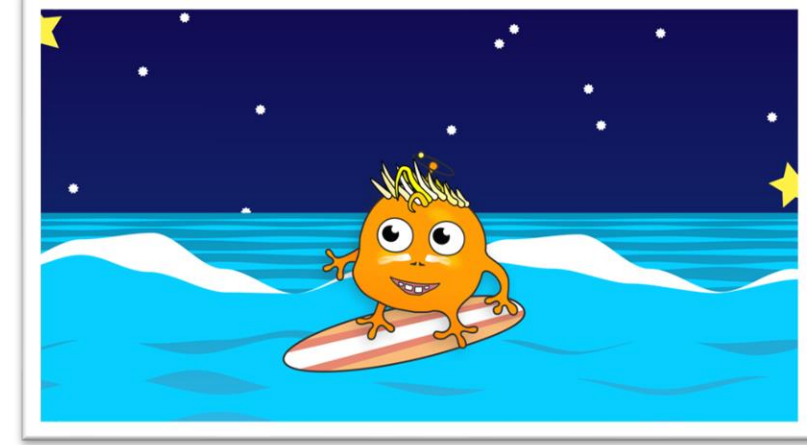
It is bigger than five but not as big as ten.

It is not an even number.

It has the grapheme **i-e** in it.

**Apply**

Listen to the sentence that your teacher dictates.  
Can you write it below?



SAMPLE

Copyright Pip and Pap Phonics ©2020