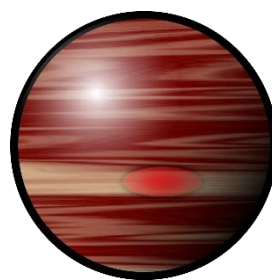
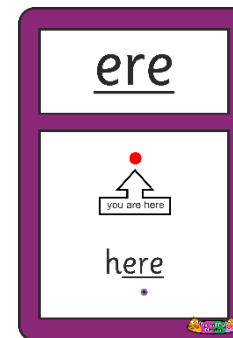




Purple Phase



Planet Challenge



Revisit and Review

Here is a picture from the story "Christmas Eve."
Can you help to label the picture?



A signpost to the airport.

LE

Snow glistening on the hills.

Copyright Pip and Pap Phonics ©2020

Brother and sister.

Christmas presents wrapped up.

Wooden sledges.

Teach

Read the words in each column.

All of the words contain the /eer/ phoneme.

But can you highlight the words where the /eer/ phoneme is spelt as 'ere'?

/eer/ phoneme		
sphere	cheer	fear
dear	mere	near
engineer	unclear	meerkat
interfere	career	severe
yearly	cheerleader	earwax
revered	gearstick	adhere

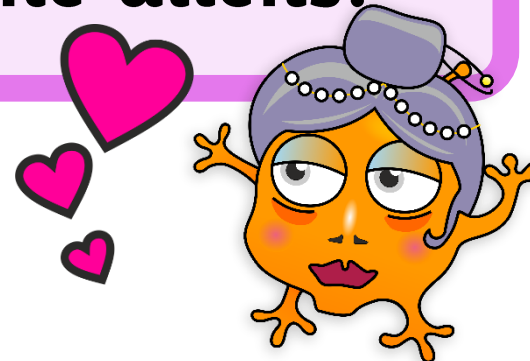
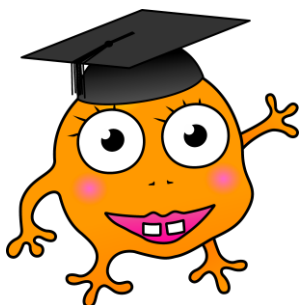
The Grand Duchess was greatly revered by all of the aliens.

Pap's Challenge

Can you use a dictionary to find out the meaning of this word?

Can you then use it in a sentence – verbally, or write it down?

'sincere'



Practise

The King and Queen are recording a news report.

Can you read their script below?

Underline any words where the /eer/ sound is spelt 'ere'.

You might choose to record the news report yourself!

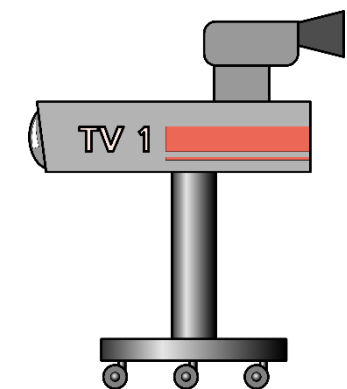
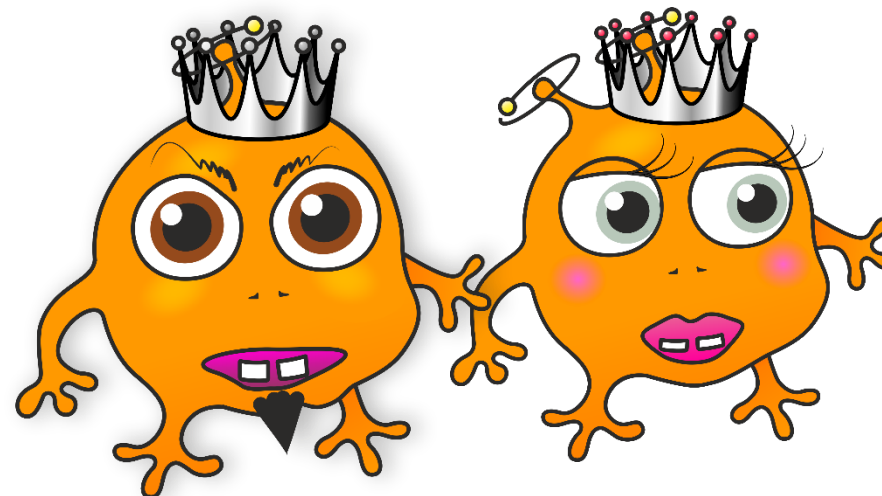
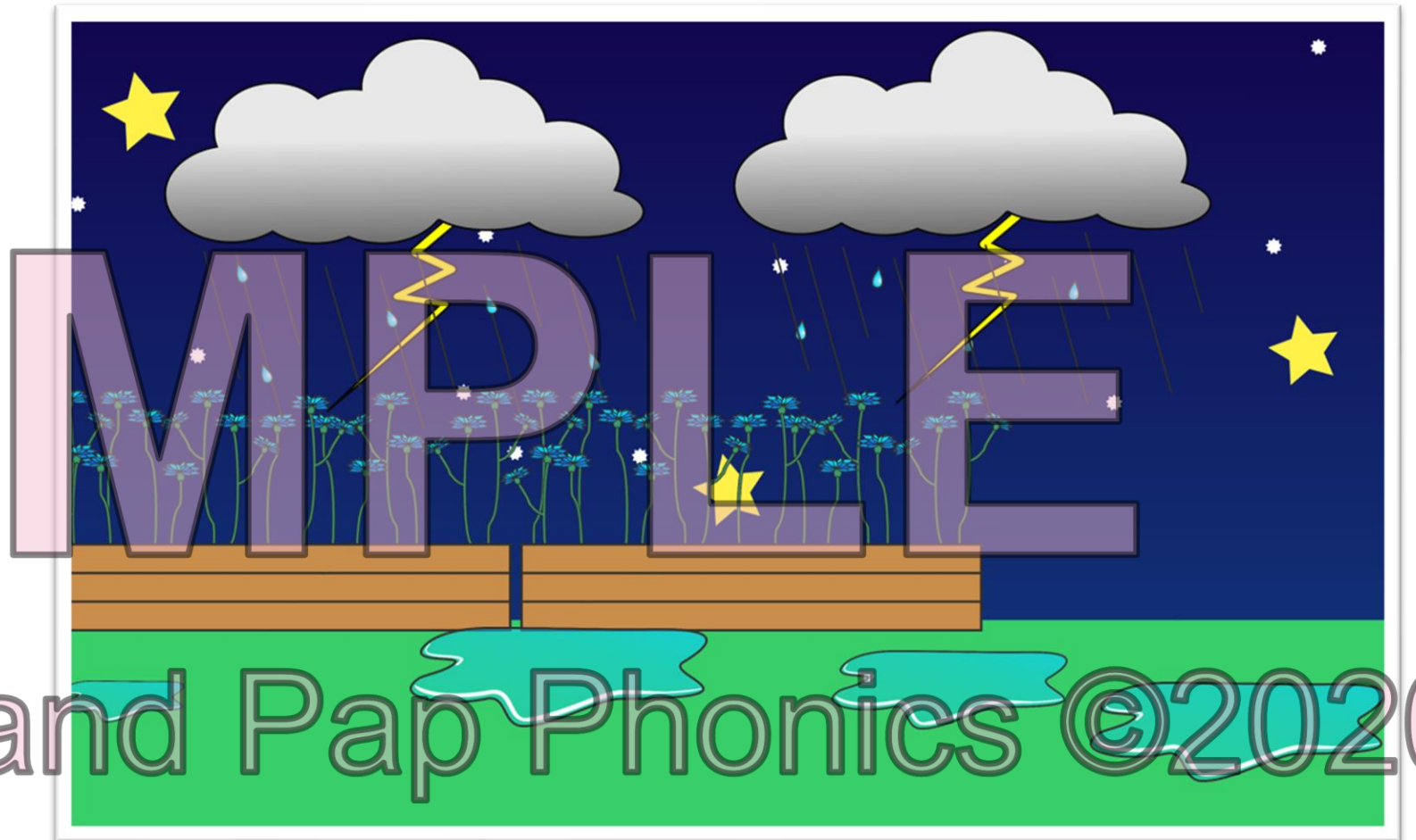
A storm is heading into
the city!

You must adhere to our
rules.

You must stay inside.

The winds and rain will
be severe.

The weather may
interfere with mobile
phone signal. Stay calm
and do not panic!

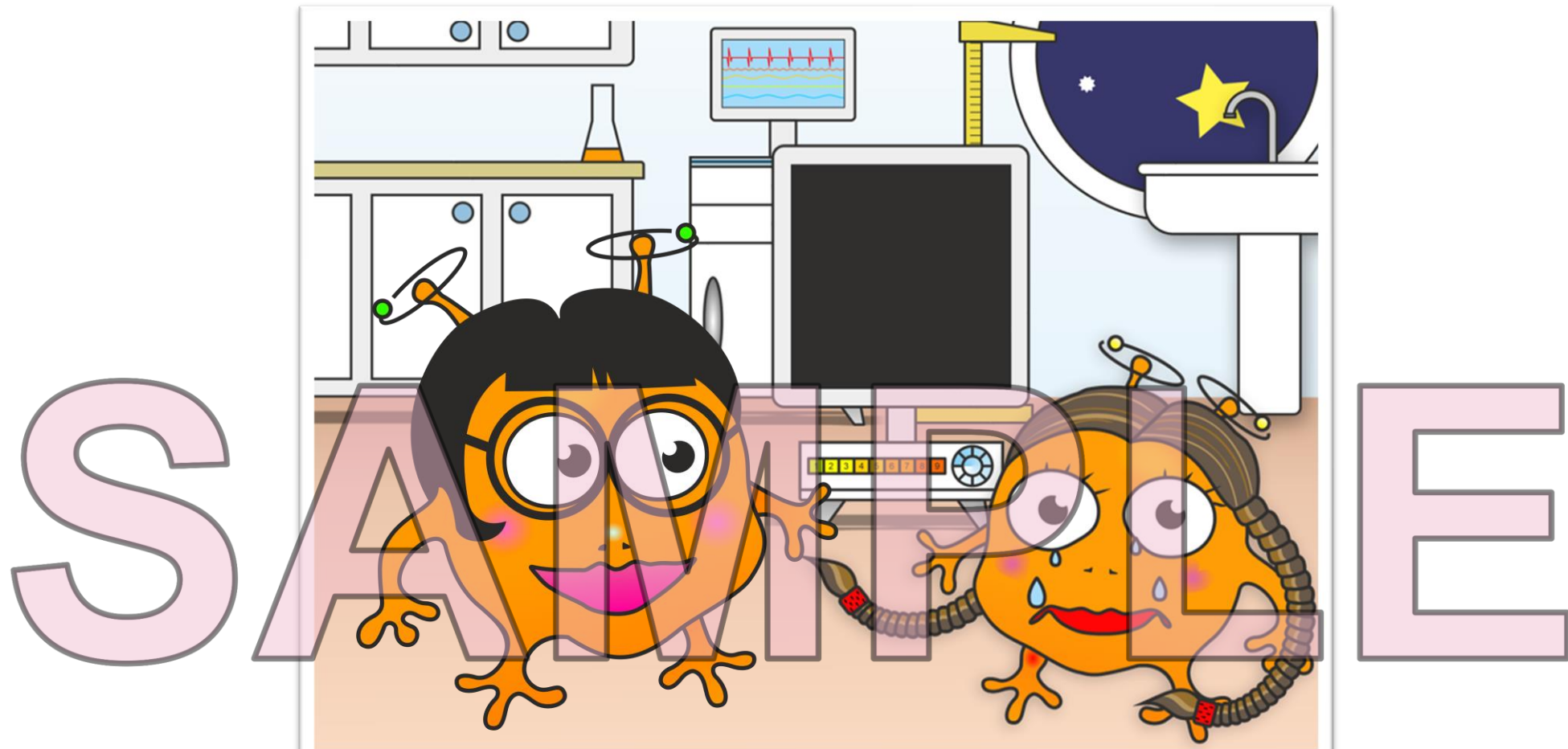


Copyright Pip and Pap Phonics ©2020

Apply

Read the mini story below.

Can you underline any words that contain the 'eer' phoneme?



Copyright Pip and Pap Phonics ©2020

Rem had a severe pain in her knee.

But she did not need to fear!

Luckily, Doc's surgery was near, just a mere mile away!

Doc has been at the surgery for years. As a little girl, it was her dream to have a career as a doctor!