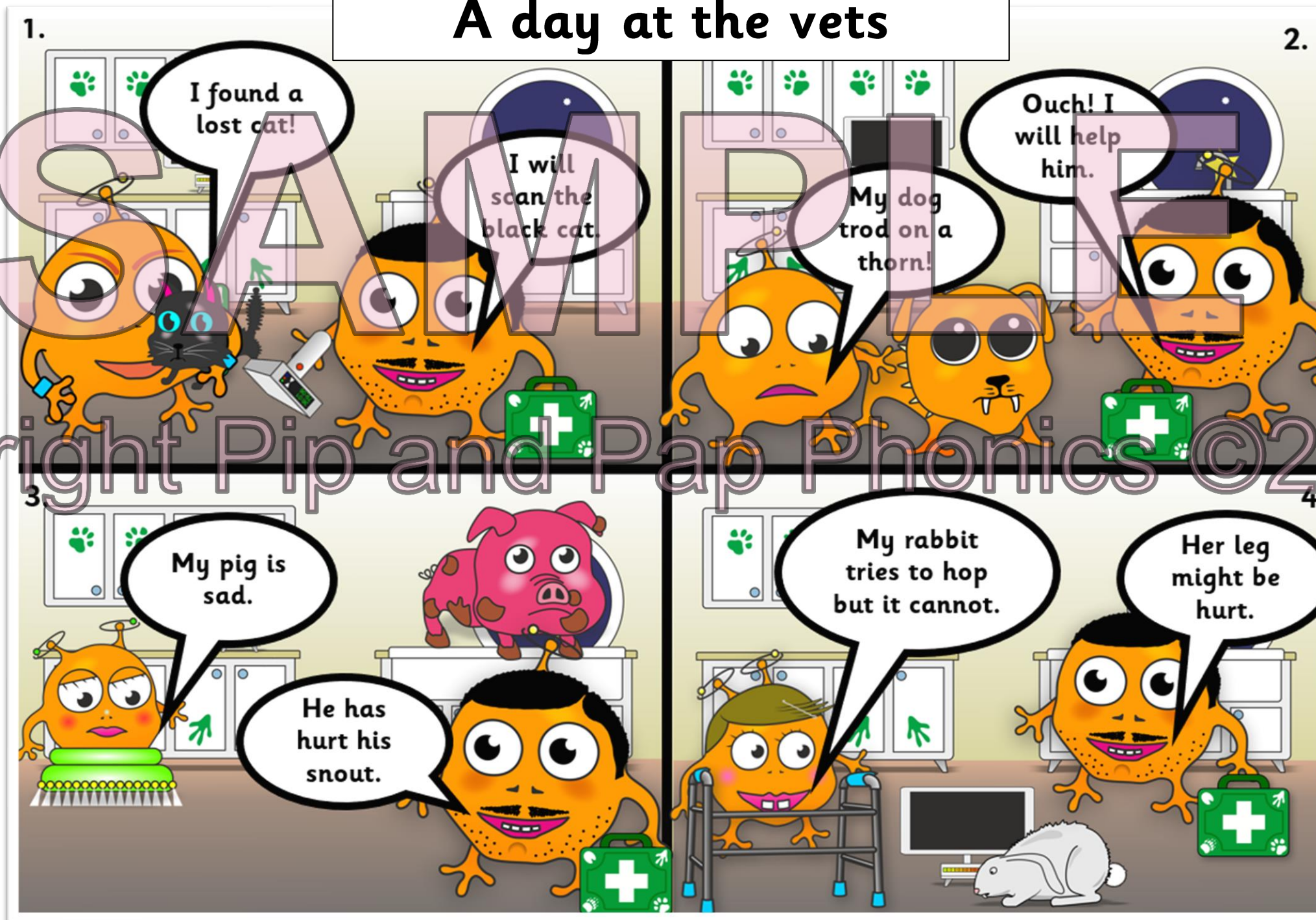


## Revisit and Review

Read the comic strip "A day at the vets."

Can you answer the questions that your teacher asks you?

### A day at the vets



Copyright Pip and Pap Phonics ©2020

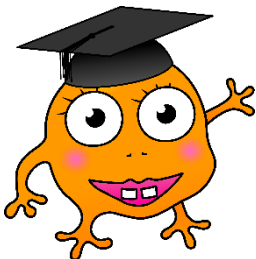
# Teach

All of these words contain the 'ea' grapheme.  
Can you read them aloud?



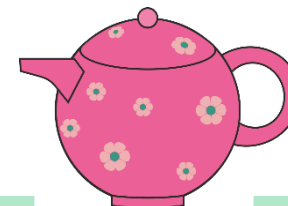
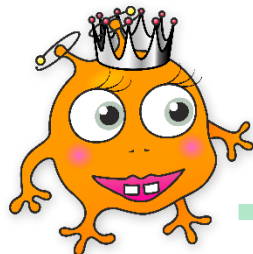
sea	seat	read	eat	tea
meat	treat	heap	pea	each
least	steam	repeat	peach	team
real	lead	east	deal	beat
beast	heat	weak	peak	jeans
meal	seal	beam	leaf	neat
bean	heal	flea	reach	least
teach	teacher	cream	teal	eager
steal	peanut	beaver	clean	dream

Copyright Pip and Pap Phonics ©2020



## Pap's Challenge

Thinking about words we have already met, do you think these words contain the 'ea' or 'ee' grapheme?  
Write the words with the grapheme you think, and then discuss together.



**Practise**

Read the sentences below out loud.

Put a green ring around words that use the 'ea' grapheme.

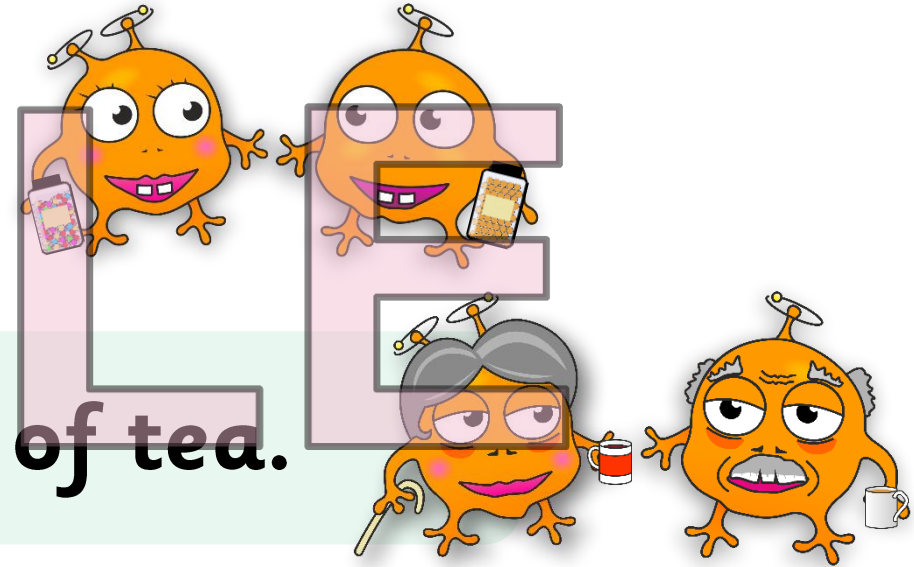
Put a pink ring around words that use the 'ee' grapheme.

**A leaf fell from the tree.**



**The twins have a jar of sweets each.**

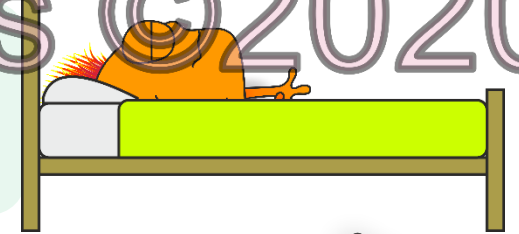
SAMPLE



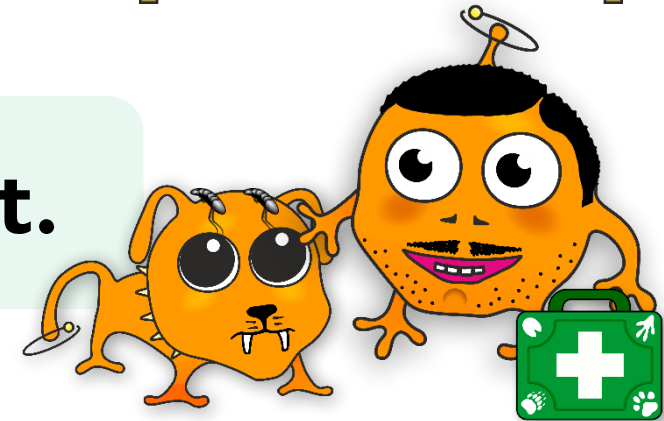
**Nan has a coffee and Papa has a cup of tea.**

Copyright Pip and Pap Phonics ©2020

**Rull is asleep. He is dreaming about running.**

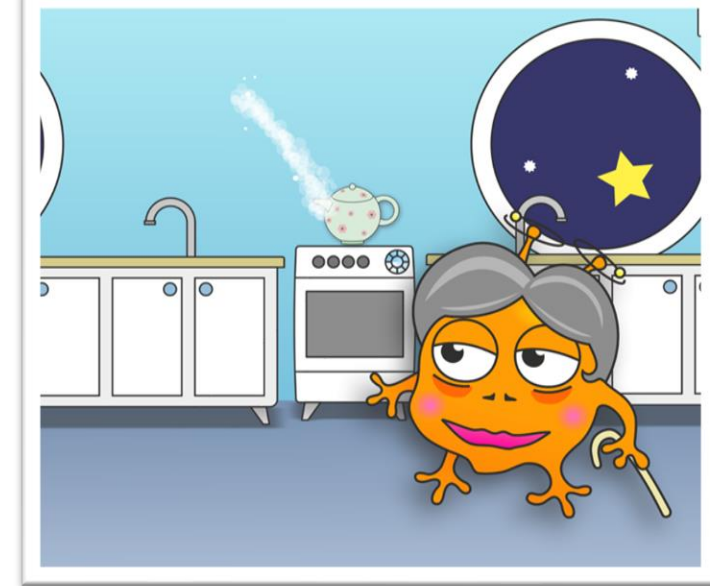


**Mas the dog has fleas! He has to see the vet.**



**Apply**

Listen to the sentence that your teacher dictates.  
Can you write it below?



SAMPLE

Copyright Pip and Pap Phonics ©2020